

CLOSTRIDIUM BOTULINUM TOXIN TYPE A 100UNITS



Product

List

by ellelux

-
-
-

ELLELUX

BIOBIJOU



ELLELUX[®]

By using the minimum botulinum toxin A that does not cause any toxic action to human body, it paralyzes muscles that make wrinkles, fundamentally preventing their appearance.

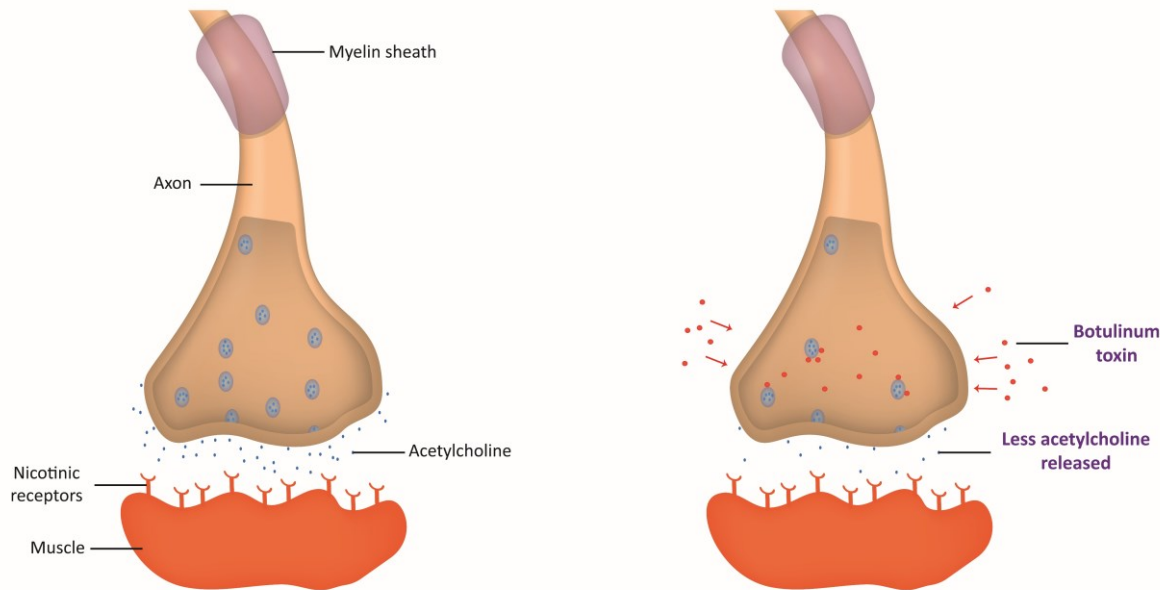
CLOSTRIDIUM BOTULINUM TOXIN TYPE A 100UNITS.



It can block the neurotransmitter between nerves and muscles, and weaken the transmission of information between them to stop muscle movements. It is an effective procedure against wrinkles by paralyzing muscle movement on the face for a certain period of time.

It can inhibit muscle contraction, relax the muscles in the treated area, and reduce the tension of muscles, thereby removing facial wrinkles, smoothing facial lines and preventing the formation of new wrinkles.

Botulinum Toxin



Botulinum toxin blocks the secretion of the neurotransmitter acetylcholine interfering with the transmission of signals from nerves to muscles, muscle contraction does not occur.

Botulinum toxin A (Botox A) is one of the highly effective neurotoxins produced by the bacterium *Clostridium botulinum*.

The efficacy of Botulinum toxin in treating hyperhidrosis and the glabellar lines is well known and FDA approved.

Ellelux is

NON-SURGICAL

FAST EFFECT

SAFETY

LIFTING



Ingredients

Clostridium Botulinum Toxin Type A

Appearance

White or light yellow lyophilization contained in a colorless and transparent vial

How supplied

100 Units/vial (1 vial)

Indication

Temporary improvement of moderate to severe glabellar wrinkles due to activities of the corrugator and/or procerus muscles in adults between the ages of 19 and 65.

Effect



Square jaw correction

If you have a square jaw by developed masticatory muscles, it is possible to correct them quickly.



Improve wrinkles and volume

It helps to smooth wrinkles on face directly by drug Injection which causes chemical paralysis status.



Palmoplantar hyperhidrosis treatment

It blocks neurotransmitter which conducts sweat production and minimize the perspiration by shrinking the sweat gland with injection onto treated area.

Post-procedure effect

Wrinkles around the eyes and glabellar

-The effect appears within 1 to 2 weeks and lasts for about 3 months.

Forehead, nose, upper lip wrinkles

-The effect appears within 1 to 2 weeks and lasts for about 3 months.

Square jaw contour

-The effect appears within 4 to 7 weeks, and lasts for 4-6 months.



Recommended for these people!

If you want lifting effect

If you want treatment for hyperhidrosis.



If you want to improve wrinkles.

If you want to improve the facial contour by pulling the muscles.

Dilution method

To dissolve this dried drug, sterilized saline without preservatives is used.

The recommended diluent is 0.9 % sodium chloride solution. Put an adequate amount of diluent into an adequately sized syringe.

Generation of bubbles or any other similar turbulences may result in denaturation of the drug, so the diluent should be injected slowly into the vial.

If the diluent was not injected into the vial in a vacuum state, the vial must be disposed of.

Record the diluted date and time on the label, and use the solution within 24 hours of dissolution.

The diluted solution should be refrigerated (2~8°C).

[Dilution Chart]

Added diluent (0.9% sodium chloride solution)	Resultant concentration (0.1ml)
1.0mL	10.0 U
2.0mL	5.0 U
4.0mL	2.5 U
8.0mL	1.25 U

Dosage and administration

The effect of this drug for glabellar wrinkles lasts for around 3 to 4 months.

The safety and efficacy of this drug for frequent administration has not been clinically evaluated, and is not recommended.

※ The total dose should not exceed the lower of 10 Units/kg body weight. When treating adult patients for multiple indications, the maximum cumulative dose should not exceed 400 Units in a 12-week interval. ※

Beware : The diluent is calculated based on 0.1 mL injection dose.

The administration dose can also be controlled by increasing the injection dose.

0.05 mL (50 % decrease from the administration dose)~0.15 mL (50 %increase from the administration dose)

Glabellar wrinkles

Dilute with preservative-free sterile 0.9% saline to 100 U/2.5 mL (4 U/0.1 mL).

Using 30-gauge needles, inject 0.1 mL into 2 points for each corrugator muscle and 1 point for the procerus muscle, for a total of 20 U in 5 points.

(Refer to figure below)



Injection guide

Forehead

dosage : 0.1cc/4 Units (per injection)
depth : 2~5mm
interval : 0.5~1.5cm

Nose

dosage : 0.1cc/4 Units (per injection)
depth : 2~5mm
interval : 1.5~2cm

Smile lines

dosage : 0.1cc/4 Units (per injection)
depth : 2~5mm
interval : 1~1.5cm

Lips wrinkles

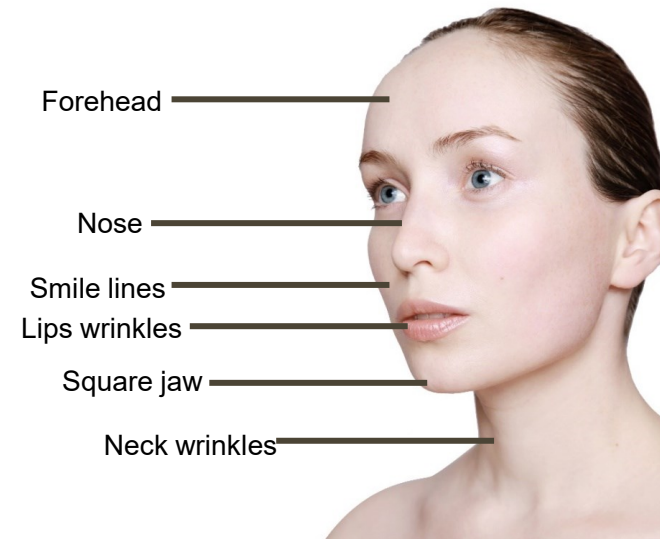
dosage : 0.1cc/4 Units (per injection)
depth : 2~5mm
interval : 1~1.5cm

Square jaw

dosage : 0.1cc/4 Units (per injection)
depth : 1.5~5mm
interval : 1~1.5cm

Neck wrinkles

dosage : 0.1cc/4 Units (per injection)
depth : 2~5mm
interval : 1~1.5cm



Thank you for watching

Thank You



www.biobijou.co.kr